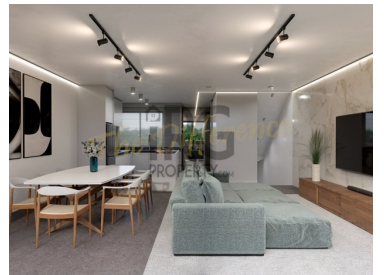
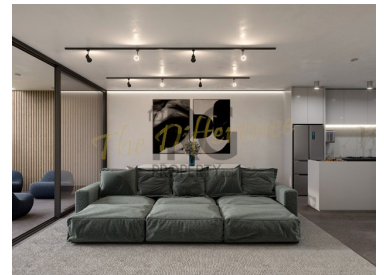




## Loulé (São Clemente) - Townhouse



**3** Bedrooms  
**3** Bathrooms  
**232** Area (m<sup>2</sup>)  
**1** Garage

**723 800 €**  
(EUR €)

### New modern townhouses in the center of Loulé

Nestled in the charming city of Loulé, this stunning new townhouse offers the perfect combination of modern luxury and convenience. With three spacious bedrooms and three bathrooms spread out over three floors, this property boasts a sleek design and ample living space.

Step out onto the terrace to enjoy views of the lush garden below or relax in the comfort of the air-conditioned interiors. The open-plan kitchen is fully equipped and the double glazing ensures a peaceful environment inside. Proximity to shopping, restaurants, hospitals, schools, and public swimming pools makes this townhouse an ideal choice for families or individuals looking for a vibrant city lifestyle. Don't miss out on the opportunity to own a piece of paradise in Loulé.

3 bedroom prices from €723,800 to €797,850.



**Stephen Anderson**

+351 916 065 478 <sup>2</sup> · +351 289 313 325 <sup>1</sup>

stephen.anderson@irgproperty.com

T +351 289 313 325 <sup>1</sup> · T +44 800 015 9997 · E info@irgproperty.com

Estrada Quinta do Lago, Almancil, 8135-160  
AMI 8687

<sup>1</sup> (Call to national fixed network) | <sup>2</sup> (Call to national mobile network)



Schedule a viewing today!

## Property Features

- Air conditioning
- Fitted wardrobes
- Garden
- Built year: 2024
- Views: Garden view
- Balcony
- Garage
- Energetic certification: In process
- Equipped kitchen
- Solar panels pre installation
- Proximity: Shopping, Restaurants, City, Hospital, Schools, Public Swimming Pools, Playground
- Floors: 3
- Double glazing
- Terrace
- Central location



**Stephen Anderson**

+351 916 065 478 <sup>2</sup> · +351 289 313 325 <sup>1</sup>

stephen.anderson@irgproperty.com

T +351 289 313 325 <sup>1</sup> · T +44 800 015 9997 · E [info@irgproperty.com](mailto:info@irgproperty.com)

**Estrada Quinta do Lago, Almancil, 8135-160**  
**AMI 8687**

<sup>1</sup> (Call to national fixed network) | <sup>2</sup> (Call to national mobile network)